

**BICYCLING  
IS  
FUN!**

**but  
LET'S  
BE  
SAFE!**

bicycle  
indiana



bicycleindiana.org  
(317) 466-9701



**always check  
your ABCs**

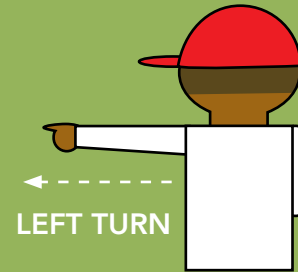
YOUR TIRES NEED  
**AIR**  
SO KEEP THEM  
FULL!



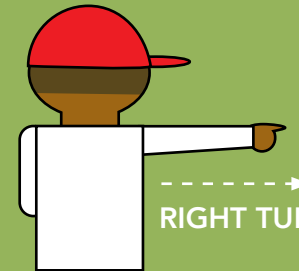
SQUEEZE YOUR  
**BRAKES**  
TO MAKE SURE  
THEY CAN STOP

YOUR  
**CHAIN**  
NEEDS TO  
MOVE SO YOU  
CAN MOVE

**always signal  
your turns**



LEFT TURN



RIGHT TURN



STOP

**always wear a helmet**



IT SHOULD BE SNUG  
ON YOUR HEAD AND  
NOT TILTED.

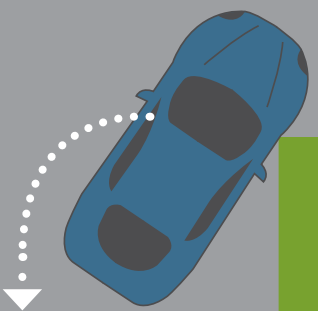
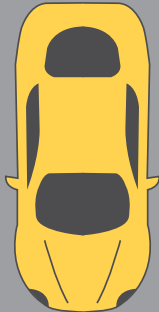
KEEP THE CHIN STRAP  
TIGHT UNDER YOUR CHIN  
AND ALWAYS BUCKLE UP!

**MAKE  
SURE  
YOUR  
HELMET  
FITS.**

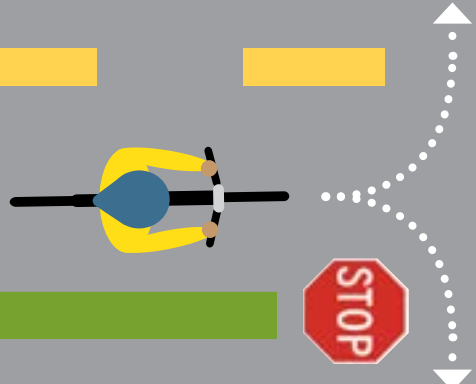
Promote. Educate. Advocate.  
Creating a safer Indiana for  
all who ride a bicycle.



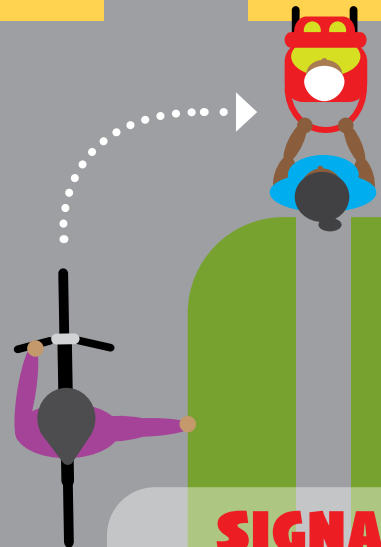
**RIDE ON THE RIGHT**  
RIDE THE SAME WAY CARS ARE GOING.



**BE ALERT**  
BE CAREFUL WHEN CROSSING DRIVEWAYS.  
ALWAYS CHECK FOR CARS.



**STOP**  
ALWAYS STOP AT STOP SIGNS AND LOOK BOTH WAYS FOR CARS.



**SIGNAL**  
YOUR TURNS ALWAYS AND WATCH OUT FOR PEOPLE WALKING.

